



REGIONAL SPECIALISED METEOROLOGICAL CENTRE -TROPICAL CYCLONES, NEW DELHI TROPICAL WEATHER OUTLOOK

DEMS-RSMC TROPICAL CYCLONES NEW DELHI DATED 22.07.2025

TROPICAL WEATHER OUTLOOK FOR THE NORTH INDIAN OCEAN (THE BAY OF BENGAL OF BENGAL AND THE ARABIAN SEA) VALID FOR THE NEXT 168 HOURS ISSUED AT 0600 UTC OF 22.07.2025 BASED ON 0300 UTC OF 22.07.2025.

BAY OF BENGAL:

Yesterday's upper air cyclonic circulation over south Odisha and neighbourhood now lies over Coastal Andhra Pradesh & adjoining south Odisha coasts & neighbourhood at 0300 UTC of today, the 22nd July, 2025 and extends upto 5.8 km above mean sea level tilting southeastwards with height.

A fresh cyclonic circulation (Remnant of Tropical Cyclone Wipha) is likely to emerge over north Bay of Bengal during next 24 hours. Under its influence, a Low Pressure area is likely to form over the same region in the subsequent 48 hours.

Scattered to broken low and medium clouds with embedded intense to very intense convection lay over central Bay of Bengal and Andaman Sea. Scattered low and medium clouds with embedded moderate to intense convection lay over north and south Bay of Bengal.

***PROBABILITY OF CYCLOGENESIS (FORMATION OF DEPRESSION) DURING NEXT 168 HRS:**

24 HOURS	24-48 HOURS	48-72 HOURS	72-96 HOURS	96-120 HOURS	120-144 HOURS	144-168 HOURS
NIL	NIL	NIL	LOW	LOW	LOW	NIL

***NOTE: EVERY 24HR FORECAST IS VALID UPTO 0300 UTC (0830 IST) OF NEXT DAY**

ARABIAN SEA:

Scattered to broken low and medium clouds with embedded intense to very intense convection lay over southeast Arabian Sea, Lakshadweep Islands area, Maldives & Comorin Area. Scattered low and medium clouds with embedded moderate to intense convection lay over Gulf of Cambay, eastcentral Arabian Sea and Weak to moderate convection lay over rest of Arabian Sea.

***PROBABILITY OF CYCLOGENESIS (FORMATION OF DEPRESSION) DURING NEXT 168 HRS:**

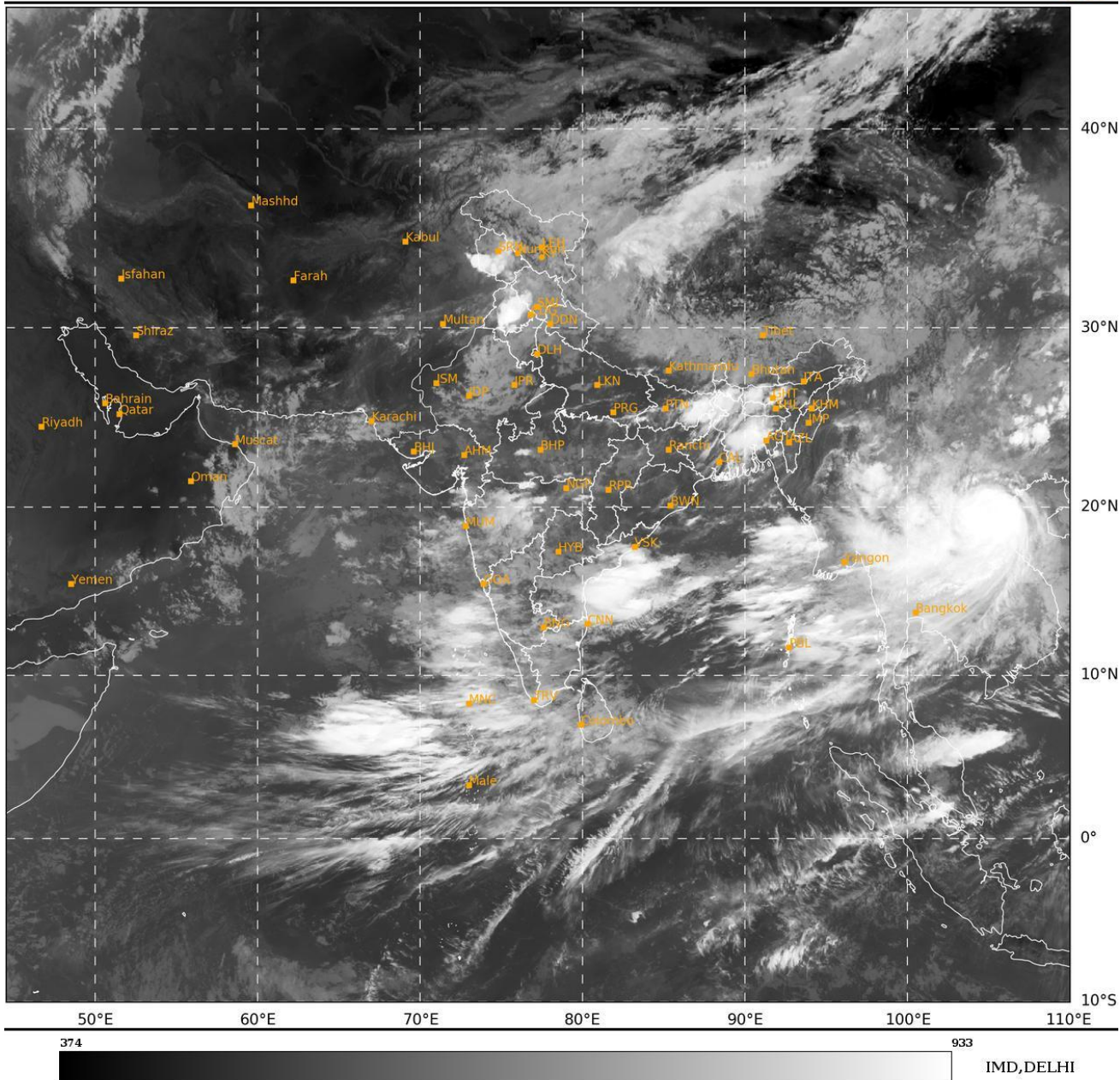
24 HOURS	24-48 HOURS	48-72 HOURS	72-96 HOURS	96-120 HOURS	120-144 HOURS	144-168 HOURS
NIL	NIL	NIL	NIL	NIL	NIL	NIL

***NOTE: EVERY 24HR FORECAST IS VALID UPTO 0300 UTC (0830 IST) OF NEXT DAY**

REMARKS: NIL

SAT : INSAT-3DR IMG
 IMG_TIR1 10.8 um
 L1C Mercator

22-07-2025/(0315 to 0342) GMT
 22-07-2025/(0845 to 0912) IST



Cloud distribution: (a) Isolated: <25%, Scattered:25-50%, Broken: 51-75%, Solid:>75%, Convection Intensity: (a) Weak: Cloud Top Temperature(CTT)>-25°C,(b)Moderate:CTT:-25°Cto-40°C,(c)Intense:CTT:-41°Cto -70°Cand(d)Very Intense::Less than -70°C
 PROBABILITY OF CYCLOGENESIS (FORMATION OF DEPRESSION): NIL:0%, LOW:1-33%, MODERATE:34-66% AND HIGH:67-100%
 This is a guidance Bulletin for WMO/ESCAP Panel Member countries. Visit respective National websites for Country specific Bulletins